

# Ella Risk Elementary School



**SPARCri 2011**

**949 Dexter Street,  
Central Falls, Rhode Island 02863  
(401) 727-7730**

**Principal: Maureen Azar**



## Principal's Message

Ella Risk Elementary School is a standards-driven teaching and learning community that promotes literacy, effective communication, problem solving, critical thinking, civic responsibility and the skills necessary for living and working in a culturally diverse society.

Central to the success of this vision is the Student Support Personnel Team (SSPT) which is a vital team supporting the social-emotional learning of all children with the intention of making them successful and safe. With the addition of an elementary school counselor in 2009, students have been provided with new learning through the comprehensive school counseling program, based on the American School Counselor Association's (ASCA) National Model. The standards-based program teaches students the knowledge, skills and behaviors they need to be successful in school and in life.

Two focuses of our school and the SSPT are the following: a) the continued development of opportunities for all students to participate in an evidence-based social skills competence program, and b) the implementation of targeted social skills groups to improve the climate and safety of our school.

## Student Support Personnel Team

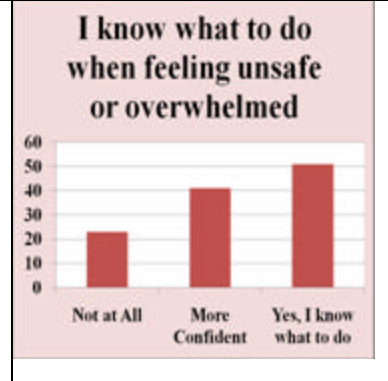
The elementary school counselor is a member of a highly experienced and credentialed professional Student Support Personnel Team (SSPT) at the Ella Risk Elementary School. The SSPT's focus is to support equity and access for every child in the school. SSPT members are involved in many professional associations that include: Rhode Island School Counselor Association (RISCA), American School Counselor Association (ASCA), Rhode Island Association of Elementary School Principals (RIAESP), among others.

Job Title	Academic Degrees	Job Title	Academic Degrees
1 School Principal	Master's Degree	1 School Psychologist	CAGS
1 School Counselor	Master's Degree	1 Home-School Liaison	Bachelor's Degree
1 School Social Worker	Master's Degree	1 School Secretary	Some Post-Secondary
1 School Nurse Teacher	Bachelor's Degree	1 Reading Specialist	Master's Degree

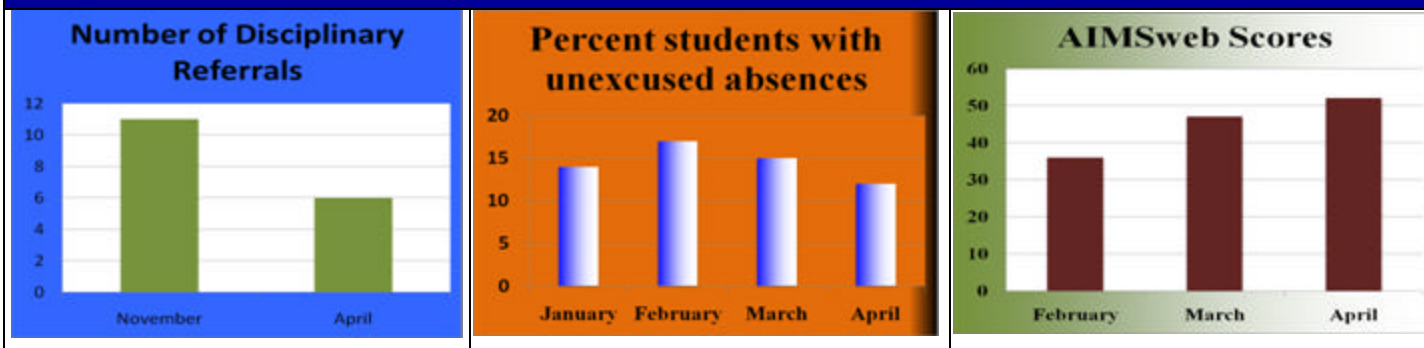
## School Climate and Safety



The SSPT plays a vital role in creating a safe and welcoming school environment. Interventions related to school climate and safety were conducted, including classroom lessons on setting boundaries, respecting self and others and self-management. These interventions were intended to help students reflect on the safety of their school environment and raise their level of awareness about appropriate ways to respond when they felt threatened or unsafe in school.



## Student Results



The SSPT utilizes data to inform their practice and prioritize their efforts to help students, a recommendation of the ASCA National Model. Data on discipline referrals was gathered as part of an Elementary and Secondary School Counseling Program (ESSCP) Grant, a primary goal of which was a decrease in the number of discipline referrals at the elementary level. The SSPT works collaboratively with teachers to deal with issues that may interfere with students' academic progress. For example, the school counselor made home visits, phone calls and in-school appointments with parents of students with high absenteeism. He also visited every classroom to discuss with teachers any issues that he may be able to assist in solving. The data in the charts above show the results of some of these efforts.

The chart at the left shows a decrease in discipline referrals, the center chart shows a decrease in the percent of unexplained absences and the chart at right shows academic improvement in mathematics in a class where the counselor taught at least one guidance lesson a day for several months.

These results address the following American School Counselor Association (ASCA) standards: Academic A: Students will acquire the attitudes, knowledge and skills that contribute to effective learning in school and across the life span; and Personal/Social A: Students will acquire the attitudes, knowledge and interpersonal skills to help them understand and respect self and others.

## Community Partnership/Resources

Community partnerships form an essential component of the efforts of the SSPT in supporting the needs of students. Project Citizen is a school-wide initiative in which Ella Risk students in grades one through four participate through the Center for Prevention of Violence/Anti-Bullying. Each grade identifies a problem and additionally seeks alternative solutions to the problem. Research on policy and procedures regarding the topic at both the state and national levels is conducted. A host of solutions to address the identified problem on a practical basis are developed. Cost and benefits of this initiative are considered and discussed among staff and students also.

Academic	Career	Personal/Social
La Salle Academy Students Parent Workshops TALL University	Central Falls Police Department Central Falls Fire Department	Family Care and Community Partnerships (FCCP) RI Parent Information Network Lifespan Parent Support Network of RI Family Fun Night

Volunteer activities that enhance student support services include the La Salle Academy students, who tutor students after school. The volunteer tutors serve to complement the district's efforts to make student learning more personal by increasing the frequency and quality of interactions with adults who care about them. Also, the Central Falls High School students, in conjunction with Goodwill, tutor students after school; and TALL University conducts an after school arts program and student tutoring.

Contact Person: Craig Conover, 401-727-7730, [conoverc@cfschools.net](mailto:conoverc@cfschools.net)