



Massachusetts Accountability Report Card

A continuous improvement document for school counseling outcomes

M.A.R.C. Junior 2010 - 2011



LEXINGTON HIGH SCHOOL
 District: Lexington Public
 School Year: Traditional
 Principal: Natalie Cohen

~ 251 Waltham Street ~ Lexington, MA 02421
 ~ 781-861-2320 (p) ~ 781-861-2421 (f)
 ~ Grade Levels: 9-12 ~ Enrollment: 1,995

PRINCIPAL'S STATEMENT

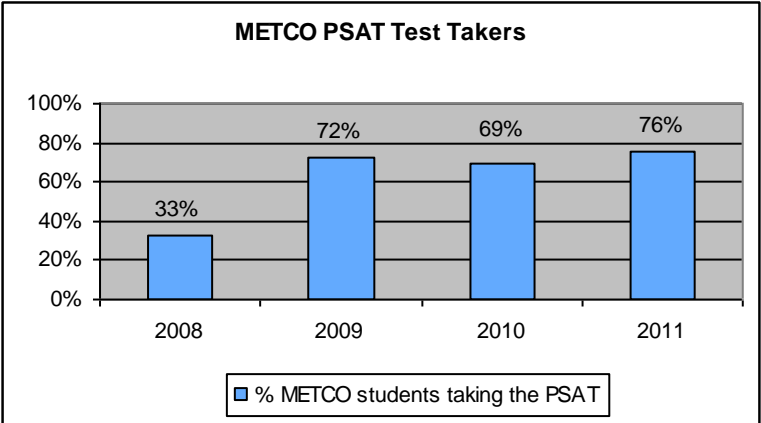
The implementation of the Massachusetts Model for School Counseling Programs will support our counselors' work in serving the diverse needs of all our students here at Lexington High School. The emphasis on student data in decision-making processes and the proactive nature of the M.A.R.C. Jr. program make it a valuable design, implementation and monitoring tool.

I wholeheartedly support the work of our counselors as they transform our counseling program to become even more comprehensive, preventative, and developmental in nature. Our students will benefit directly and dramatically.

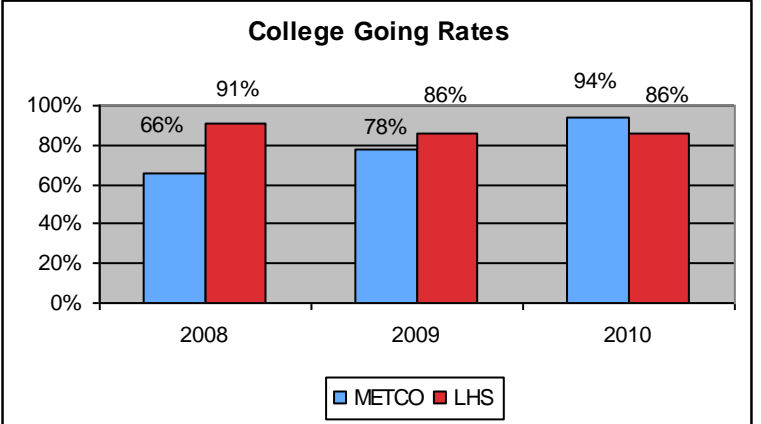
Natalie K. Cohen
 Principal

STUDENT RESULTS

The LHS Guidance Department is committed to closing the achievement gap. In line with the District's Equity and Excellence initiative, the Guidance Department strives to increase access for all populations of students to college entrance exams. In response to a low percentage of METCO students taking the PSAT in 2008, individual counselors began calling the homes of METCO juniors, informing parents/guardians of the upcoming PSAT and encouraging registration. As a result, the percentage of METCO students taking the PSAT jumped dramatically in 2009. The Guidance Department now works with the LHS METCO office to place the calls home, and the percentage of METCO students taking the PSAT has stayed high due to this continued intervention.



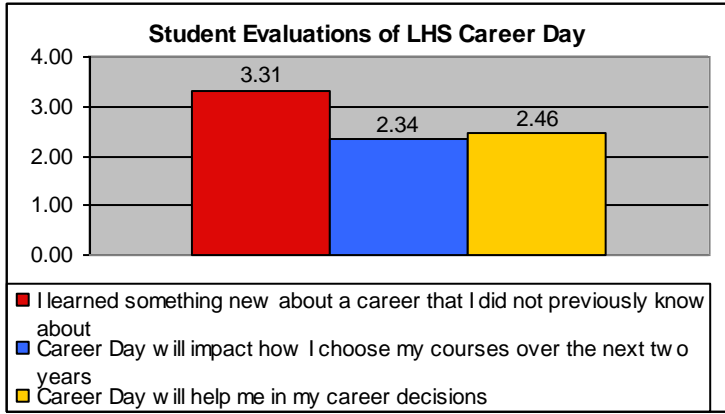
The percentage of METCO students continuing on to two and four-year colleges also increased significantly over the same time period, surpassing the overall LHS graduation rate in 2010.



In order to better align the counseling program with the Massachusetts CDE Benchmarks, the Guidance Department organized and implemented a Career Day in Spring 2010. A class-wide initiative targeting all sophomores, Career Day was designed specifically to address the MA CDE Benchmark W3-3 (knowledge of risks and rewards of various careers). The administration and PTSA supported the Guidance Department in this initiative. While there were not enough resources to run Career Day in Spring 2011,

Prepared by Cynthia Tang, School Counselor & Mari Lubin, School Counseling Practicum Student

survey-based quantitative and qualitative data showed students' interest and need for continuing this initiative. The Guidance Department is currently planning for Career Day in Spring 2012, and is using additional survey data to inform its implementation.

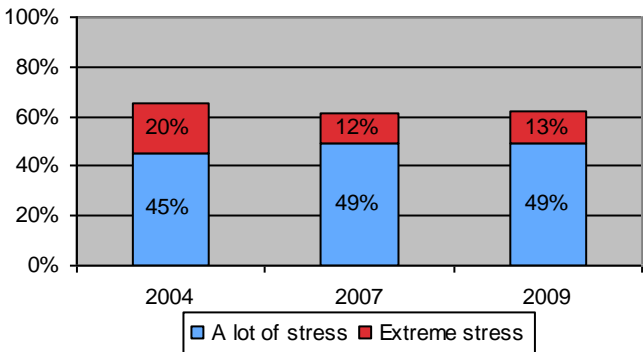


FOCUS FOR IMPROVEMENT

Reducing unhealthy stress and promoting resiliency among students is a continuing goal for the LHS Guidance Department and the Lexington school district. To support the system goal of ensuring that the academic, social, and emotional needs of ALL students are identified and matched with appropriate and effective curriculum and instructional experiences, the LHS Guidance Department has begun a multi-year process to develop a K-12 Guidance curriculum based on ASCA national standards.

Data from the Massachusetts Youth Risk and Behavior Survey demonstrates that the percentage of students experiencing "a lot of stress" and "extreme stress" caused by their classes has declined since 2004. The most recent data (from 2009) suggests that there is room for improvement.

How Much Stress Do Your Classes Cause You?



We collaborate regularly with parents, teachers, administration, and outside providers to support our students. Initiatives and changes to our programming for the 2010-2011 school year include:

- District-wide collaboration to develop K-12 Guidance programming with consultation from Katie Gray of Unique Potential.
- ALPHA (A Learning Place for Hospitalized Adolescents), a program to transition students returning from hospitalizations into the high school, was put into action.
- Running a grief group, which is co-facilitated by The Childrens Room, a community organization.
- Creation of a military liaison to the military branches.

SCHOOL COUNSELING TEAM

The LHS School Counseling Department is comprised of one guidance director, ten school counselors and three social workers, in addition to five support staff.

Staff Name	Position	Certification	Yrs Exp
Lester Eggleston	Guidance Director	MEd	11
Alison Bennett	School Counselor	MEd	7
Melissa Buttaro	School Counselor	MEd	23
Suzanne Cervo	School Counselor	MS	30
Beth Kress	School Counselor	MEd	24
Chrissy Maloney	School Counselor	MEd	2
Matthew Medugno	School Counselor	MEd	5
Stephanie Michael	School Counselor	MS	7
Stacy Proowski	School Counselor	MEd	1
Cynthia Tang	School Counselor	MEd, CAGS	6
Carrie Thibodeau	School Counselor	MEd	4
James Farnham	Social Worker	MSW, MA, LICSW	18
Joanne Loomer	Social Worker	MSW, LICSW	29
Martha Queenin	Social Worker	MSW, LICSW	25

LHS School Counseling Department Mission Statement

The mission of the School Counseling Department is to promote social/emotional, academic, and career development for all students. We help students to form healthy choices, to acquire a sense of civic responsibility, and to develop the skills necessary to realize their individual goals. Together, we support access and equity for all learners, embrace diversity, and encourage collaboration in our school and community.

(adopted January 2008)